

TRIP TO ARUNACHAL

ARUNACHAL PRADESH



PRICE

₹0

DURATION

6 Days / 5Nights

TOUR INCLUDES



Day Wise Itinerary

Day 1 : Guwahati :

Day 1: Guwahati - - Dirang (250 Kms / 8 Hrs)

Arrival at Guwahati Airport/Railway station and directly proceed to Dirang. Dirang is a charming city located in the north-eastern state of Arunachal Pradesh. With beautiful Apple orchards, Dirang holidays draw travellers for a welcome break. Check in to your hotel. Evening free for leisure. Overnight stay at Dirang hotel.

Day 2 : Dirang To Tawang :

Day 2: Dirang To Tawang (130 Kms / 5 Hrs)

After breakfast, drive to Tawang. Sela pass: It is a narrow pass in the mountainous regions of Arunachal Pradesh, at an elevation of 13700 ft above mean sea level and it signals our entry into the Tawang valley. There are many scenic spots on the way to Tawang i.e. Paradise Lake, Jung fall, Jaswant Garh, Hot Water Spring Overnight stay at Tawang hotel.

Day 3: Tawang Local Sightseeing :

Day 3: Tawang Local Sightseeing (Bumla Pass Madhuri Lake)

After breakfast go for local sightseeing. Tawang is the 6th Dalai Lama's birthplace. Tawang is a hill station situated at an altitude of 3500 meters. It is one of the most spectacular destinations for any tourist. Tawang is located at a height of 12000 ft above the sea level. It is a land of Monpa Tribes. The main attraction of Tawang is the 400 years old Tawang Monastery and War Memorial and Tawang ropeway.

Bumla Pass This is a really beautiful place. This location is off the beaten track for those who love roaming in the wilderness. It is a fantastic place. The Bum La Pass is located about 37 km away from Tawang in Arunachal Pradesh, at the Indo-China border above 16,500 ft above sea level. En route, visit PTSO Lake, Madhuri Lake. Evening back to Tawang.

Day 4: Tawang To Bomdila :

Day 4: Tawang To Bomdila (180 Kms / 6 Hrs)

This morning, after breakfast, proceed to Bomdila. En route visit Bomdila Monastery with Himalaya view point.. Evening free for leisure. Overnight stay at Bomdila Hotel.

Day 5: Bomdilla To Guwahatt :

Day 5: Bomdilla To Guwahati (Ghy) (280 kms / 8 hrs)

After breakfast visit Kamakhya Temple & Umananda Temple at the Peacock Island which is the smallest inhabited River Island in the World. In evening you may take a River Cruise (Direct Payment) on the mighty River Brahmaputra. You may also visit the local market. Assam is famous for Assam Silk particularly Golden Muga Silk, Assam Tea, Bamboo and Cane Products. Overnight stay in Guwahati.

INCLUDES

- Accommodation in well-appointed rooms.
- Breakfast at the hotel.
- Inner Line Permit.
- Vehicle for Bumla Pass.
- Pickup and drop from Station/Airport
- All sightseeing as per the itinerary

EXCLUSIONS

- Any Air or Rail fare.
- No Guide Charges.
- Any other meal not mentioned in price includes. ·
- Any expenses of personal nature. -Any entry fee at temple

NOTE

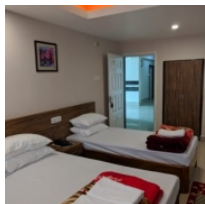
Overnight Stay at Hotel

Bumla pass, Madhuri Lake, Ani Gumpha, PTSO Lake can be made on supplement charge by hiring a separate vehicle from Tawang syndicate (vehicles from outside state are not allowed to do the sightseeing).

PAYMENTS

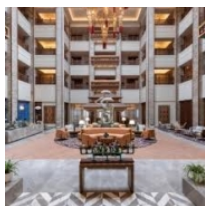
- * To secure your reservation, you need to make 50% of the total invoice amount as an advance, and the remaining balance should be paid 30 days before the date of arrival.
- * If the payment is not received by the due date, we may treat the booking as cancelled.
- * For 4* and 5* properties, the full booking amount should be transferred before confirmations.
- * Cancellation will be strictly followed as per the hotel policies.

Accomodation



Hotel Envisaged: Bomdila Hotel
Nights 1
Approx Price0

Bomdila Hotel



Hotel Envisaged: Tawang hotel.
Nights 1
Approx Price0

Overnight stay at Tawang hotel.



Hotel Envisaged: Dirang hotel.
Nights 3
Approx Price0

Check in to your hotel. Evening free for leisure. Overnight stay at Dirang hotel.